

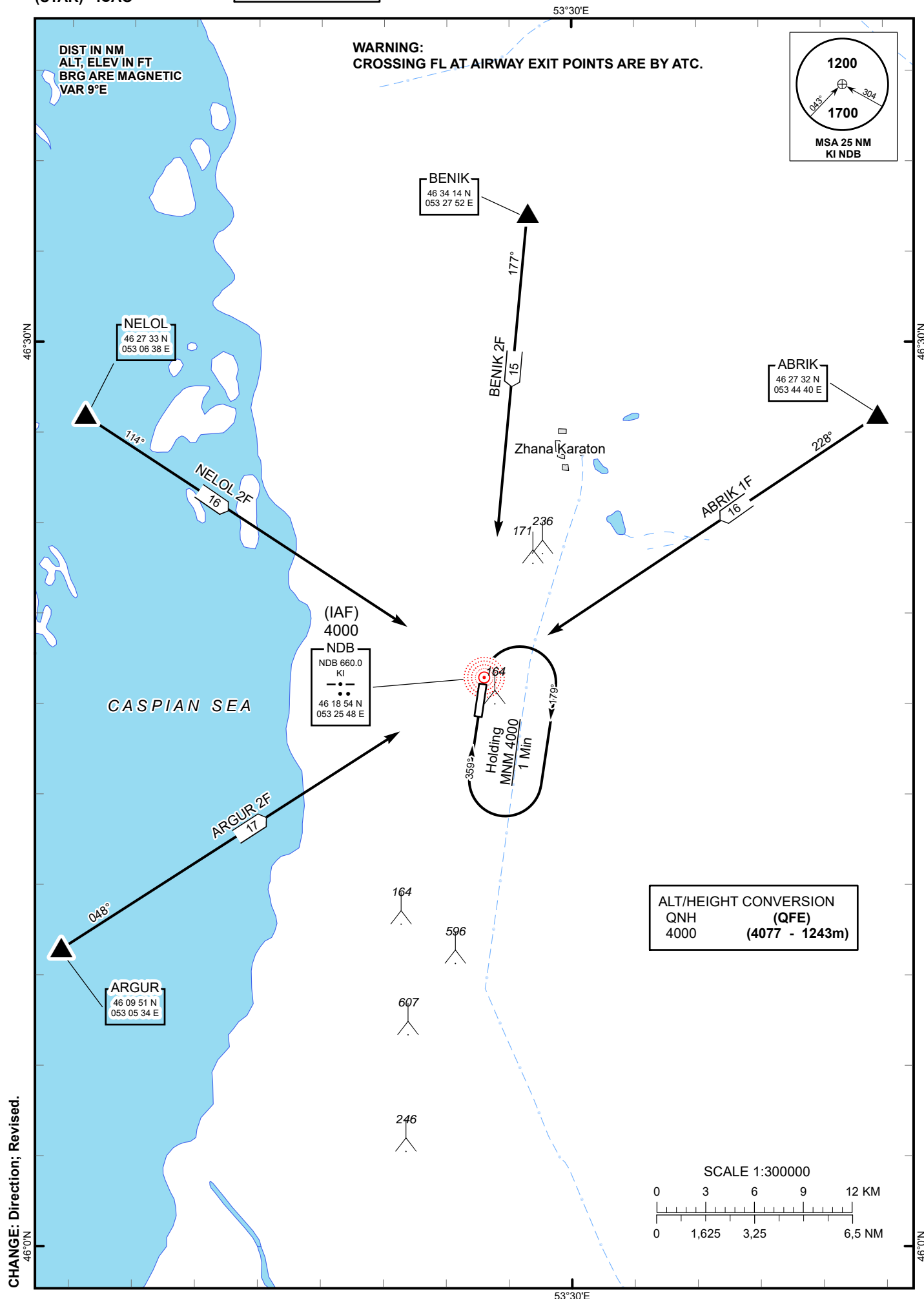
STANDARD ARRIVAL
CHART - INSTRUMENT
(STAR) - ICAO

TRANSITION ALTITUDE
10000 FT

TENGIZ TOWER 119.20

ABRIK 1F, ARGUR 2F,
BENIK 2F, NELOL 2F.

TENGIZ
RWY 18



STANDARD ARRIVAL ROUTES - INSTRUMENT (STAR) TENGIZ RWY 18
--

ARGUR 2F

After crossing ARGUR (N460951 E0530534), proceed on track 048° to KI.
--

NELOL 2F

After crossing NELOL (N462733 E0530638), proceed on track 114° to KI.
--

BENIK 2F

After crossing BENIK (N463414 E0532752), proceed on track 177° to KI.
--

ABRIK 1F

After crossing ABRIK (N462732 E0534440), proceed on track 228° to KI.
--